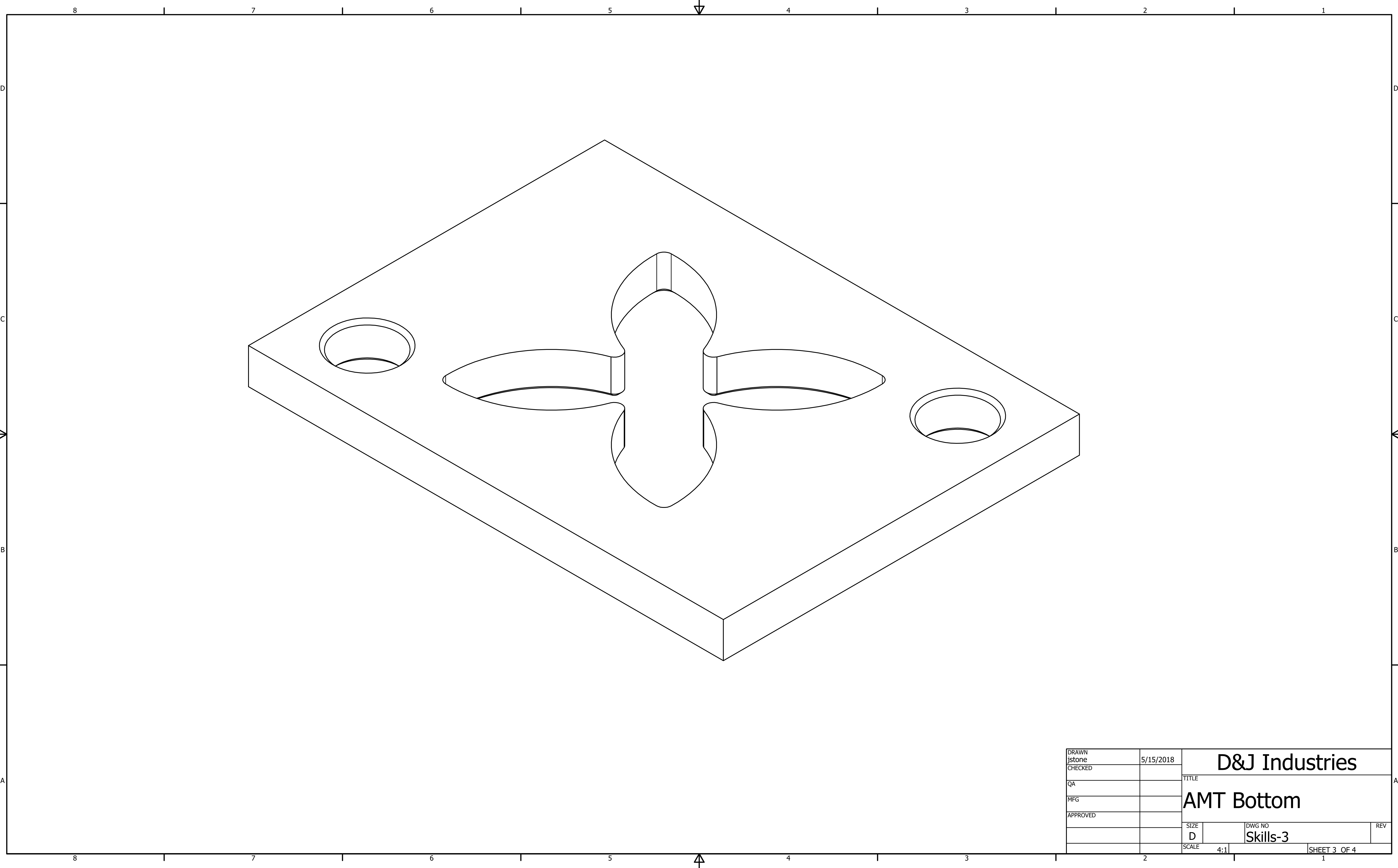
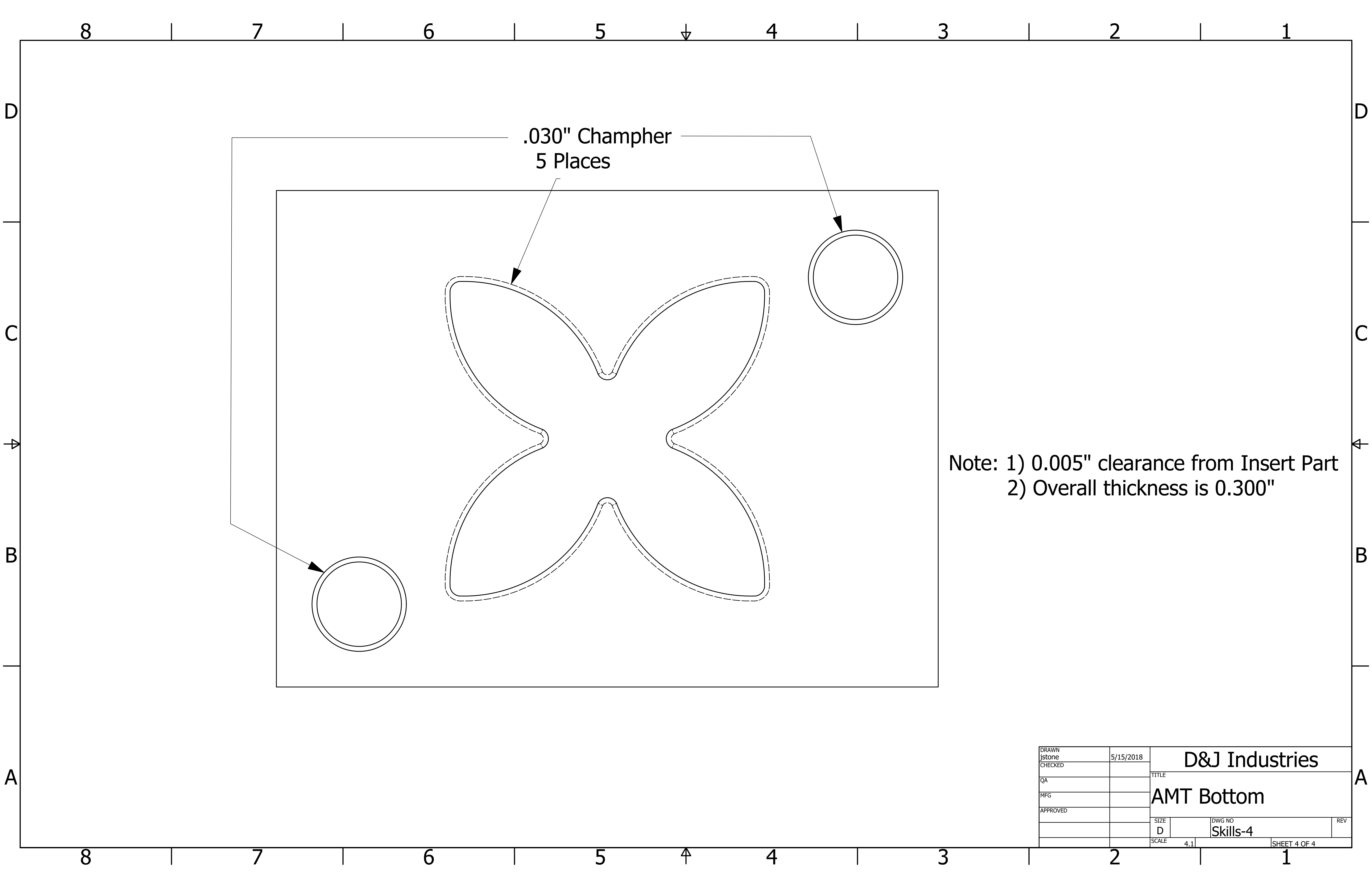


Note: 1) Use sheet 1 and 2 for pin location and diameter.
 2) Use Detail A from sheet 1 for pry slot dimensions.

DRAWN	jstone	5/15/2018	D&J Industries	
CHECKED			TITLE	
QA			AMT Cover - ECO	
MFG			SIZE	DWG NO
APPROVED			D	Skills 5
			SCALE	3 : 1
				SHEET 1 OF 1



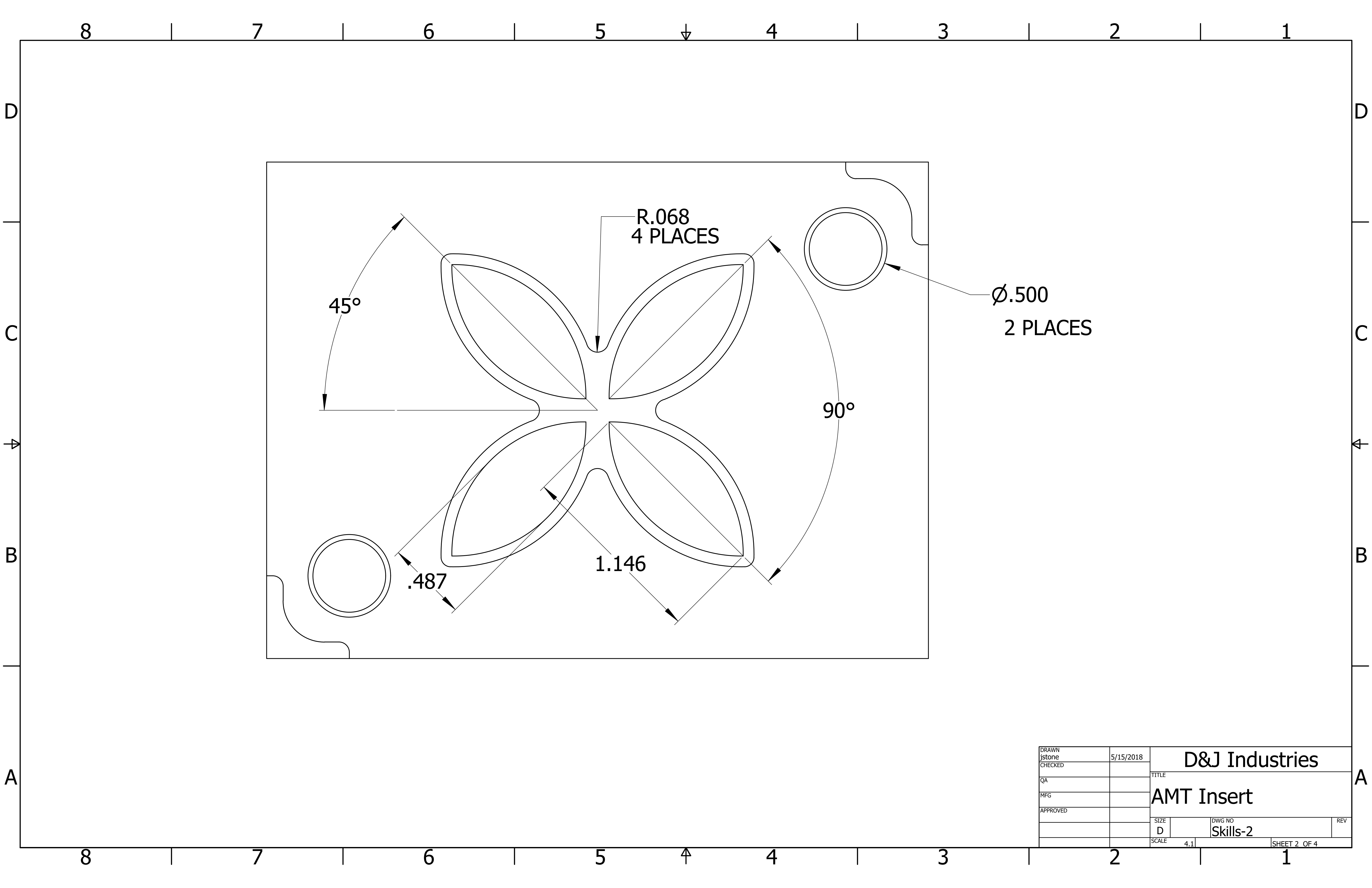
DRAWN	jstone	5/15/2018	D&J Industries	
CHECKED			TITLE	
QA			AMT Bottom	
MFG			SIZE	DWG NO
APPROVED			D	Skills-3
			SCALE	4:1
				SHEET 3 OF 4



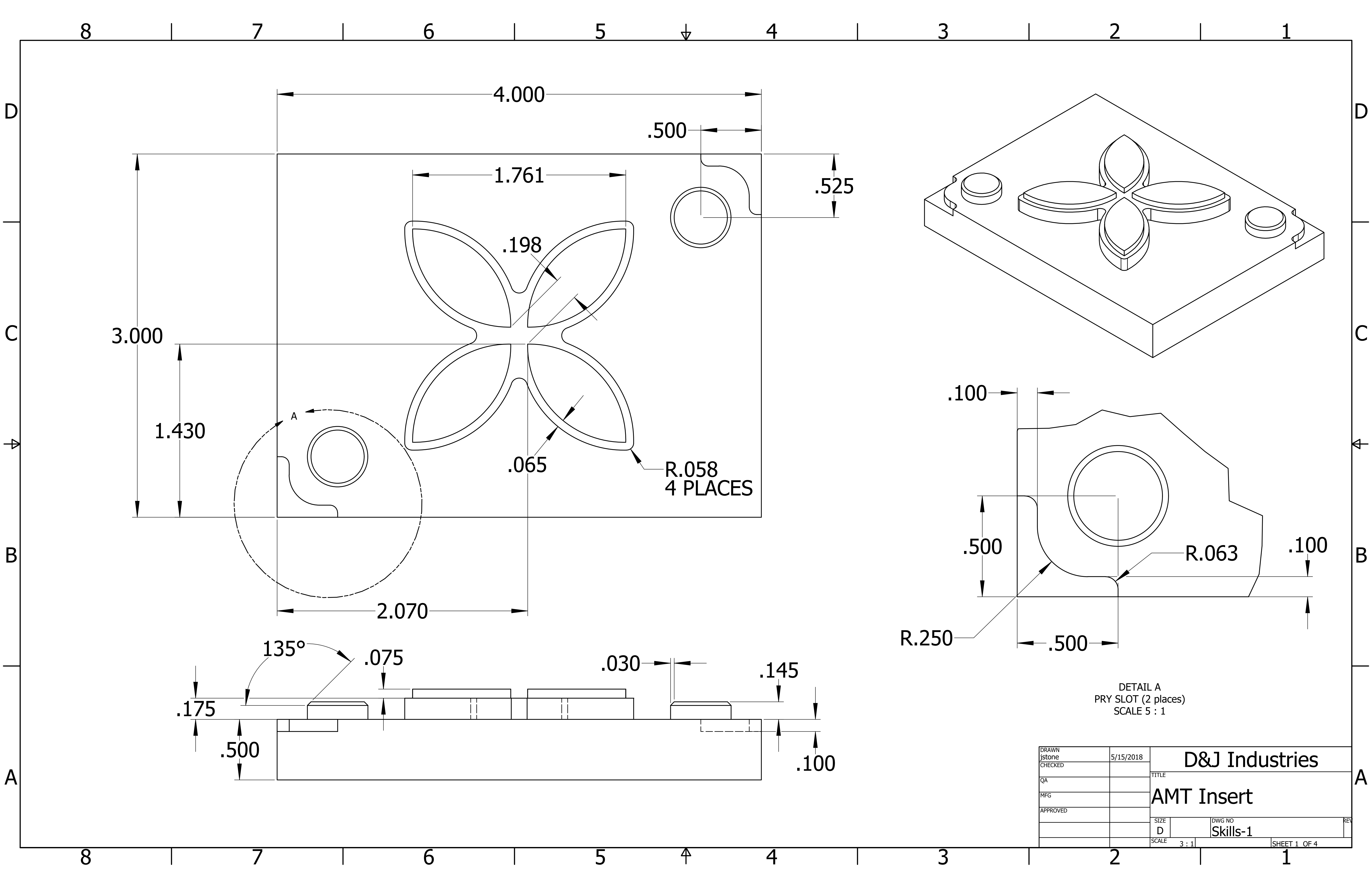
.030" Champher
5 Places

Note: 1) 0.005" clearance from Insert Part
2) Overall thickness is 0.300"

DRAWN jstone	5/15/2018	D&J Industries		
CHECKED		TITLE		
QA		AMT Bottom		
MFG		SIZE	DWG NO	REV
APPROVED		D	Skills-4	
		SCALE	4:1	SHEET 4 OF 4



DRAWN	jstone	5/15/2018	D&J Industries		
CHECKED			TITLE		
QA			AMT Insert		
MFG					
APPROVED					
			SIZE	DWG NO	REV
			D	Skills-2	
			SCALE	4:1	SHEET 2 OF 4



DETAIL A
PRY SLOT (2 places)
SCALE 5 : 1

DRAWN	jstone	5/15/2018	D&J Industries	
CHECKED			TITLE	
QA			AMT Insert	
MFG			SIZE	DWG NO
APPROVED			D	Skills-1
			SCALE	3 : 1
				SHEET 1 OF 4